

VMFA-251

# BODO NEWS BULLETIN

"The Thunderbolts"

LTCOL D.L. Doyle, Commanding

1. Did you know you can get .90 ORE for each empty coke bottle returned to the canteen?
2. Let's remember consideration for others, quiet hours begin at 2200!! Keep the radio's and ruckus down to a minimum.
3. If you can't find SSgt LINN anywhere, try the boat docks by the SAS, he's been tryin' to catch Namu, the Killer Whale, with a 25 pound test!!!
3. Guess what Friday, 16 March, is?, no it is not Rod Stewarts birthday, but it is VMFA-251 HAIRCUT DAY. Those who need one get one don't wait to be told. Sgt Lough will be experimenting with his barber experience. {....OK Mac, take it down to the wood!} Choppin' starts in the hangar head early Friday morning.
4. Wednesday is LAUNDRY DAY. Put your bag in the box at the rear of the mess deck. LCPL PAULS will help ship it out and get it returned to your tent around 1300 on Thursday. Tie those bags tight!!
5. DO NOT USE A MAGIC MARKER TO MARK YOUR CLOTHING BAG! The ink washes out along with your name and your unit, and presto, you've lost your laundry. Use an indelible {won't come off type} ink pen either from the PX or borrow one from a Maintenance Chief.
5. Don't worry McKenzie liberty call will be sounded again before you know it, hang in there.
6. If your tent gets a Stars and Stripes newspaper paleeze pass it around, there are only five for the whole squadron.
7. Top YOUNG and Cpl KREBBS are doing just fine and are both in the Bodo AS Hospital just up behind the SNCO/OFFICER Club. They should be headed back to the good ol' U.S. of A. pretty soon. Lucky them. Be careful out on that ice Marines!!
8. Group SgtMajor sends - there will be no, repeat no, knives of any type, taken out of this camp. Leave 'em behind when you get out on liberty. Thats the word.
9. Gy PIERCE is offering a 100 KR reward for anyone who can bring him the clown who keeps counting to 50 on the PA system while he is trying to sleep!
10. The PX is to extend there evening hours by one hour expressly for the Marines coming off of day crew. Use it or lose it.
11. If anyone finds LCPL PAULS' bright orange shorts, hide them. His body and mind may {repeat, may} be here but his legs are in Beaufort.
12. That's all for now, carry on.

# ARCTIC-CERTIFICATE



NORTH CAPE

VARDØ

TROMSØ

Arctic Circle

BODØ

66° 33' N

TRONDHEIM

BERGEN

Norway

OSLO

STAVANGER

This certificate  
confirms that

LCPL D. J. LEPPARD

has visited  
Bodø Main Air Station  
Geographical location  
67° 16' N 14° 22' E

Bodø,

*P. I. M. J. J.*  
Co Bodø M.A.S.

## BODØ-AIR STATION, NORWAY.

MAG-14 CAMP BODIN INFORMATION SHEET

1. Welcome to Norway and Camp Bodin! The information in this hand-out is intended to provide all Marines with the necessary information for living in the Camp Bodin area.

2. Mess Hall - Location - Exercise Hall (See Map #1)  
 Hours - Breakfast 0500 - 0800  
 Dinner 1630 - 1800  
 Lunch will be an MRE in the unit work spaces.  
 See unit S-4 for issue of MRE'S.

3. Laundry. Each unit must assign a laundry representative who must report to Lt. BASIL at the Group HQ (Classroom #1)(See Map #1) upon arrival. Each Marine must have a nylon, perforated bag with a large safety pin to utilize the laundry system. This bag must be marked with the individual's name and unit. The laundry bags will be delivered by each individual to the unit laundry representative prior to 0800 on the unit's assigned laundry day in accordance with the following schedule:

DAY	UNIT
Mondays	MWSS-273, BSSG, H&MS-14, H&MS-31
Tuesdays	Messmen, Cooks, Group HQ, MABS-14, VMA (AW)-224
Wednesdays	Det, VMGR-252, MATCS-28, MWCS-28, VMFA-251
Thursdays	VMFA-122, Det, VMAQ-2

Laundry will be returned to units 24 hours after receipt by Group HQ. Laundry is free.

4. Canteen (Norwegian). There is a small canteen and PX on the ground floor of the Norwegian Mess Hall (see Map #2). Hours for this canteen are as follows:

Sat - Sun	1700-2100
Mon - Fri	1130-1200 1700-2200

5. Club (USMC). There will be an all-ranks club operating on the mess decks from 1900-2300. Beer will be available at a limit of one liter (2 beers) per man from the unit representative. There will also be movies, games, books, magazines, video machines, etc., available for recreation. POC for further information will be Chaplain LEWIS, Group Chaplain at the Group HQ.

6. PX (Marine). The PX is located on the Mess Decks. Hours of operation will be 0800-1700 each day.

7. Barber Shop. Each unit is responsible for haircuts. However, Barber kits are available from Group Supply. SgtMaj STYBORSKI, Group SgtMaj will be the Group Barber. He will be giving free haircuts in the hallway in the classroom area (See Map #1). Hours will be 0800-1600.

8. Postal. The Post Office is located in Classroom #4 (See Map #2). Hours of operation will be 0800-1700. Full postal service is available, i.e., Stamps, Money Orders, Registered Mail, parcels, etc. Your address while in Norway is:

NAME, RANK, SSN  
 US Element, UNIT (the unit to which you belong)  
 Group 21  
 FPO, New York 09502

9. Disbursing. Located in the same room as Postal. Hours of operation are:

Mon-Sat                      0730-1130

Disbursing Service will be provided as follows:

Check Cashing: Negotiable items that may be cashed:  
Federal, State and Local govt checks  
Postal Money Orders  
Travellers Checks  
Bank Money Orders  
Certified Checks, Cashiers Checks drawn in USA  
Personal Checks

Check Cashing limits:

Marines on Direct Deposit - Aggregate of \$1,000 per month  
Marines not on Direct Deposit - Aggregate of \$500 per month

10. Medical/Dental. There will be three primary aid stations in the Camp Bodin/Bodo Air Station area as follows:

Camp Bodin Classroom#3 - For BSSG, MWSS-271, MAG-14 HQ, Cooks, Messmen,  
MABS-14 Comm and Transient Personnel  
Hangar # 7 - For VMA(AW)-224; Det, VMAQ-2; MABS-14 WX and H&MS-14  
Avionics  
Hangar # 5 - For VMFA-251, VMFA-122, H&MS-31/14 GSE and MABS-14  
Recovery

Sick call hours are 0730-0930 and 1300-1400 each day.

11. Bus Transportation. There will be two types of busses available for USMC use. There will be a Marine operated 15 passenger van that will visit each work space on the hour in accordance with the schedule posted in the entrance hallway of the classroom area (See Map #1). There will also be civilian busses contracted each day to move units from Camp Bodin to BODO AS. A copy of this bus schedule will be provided to unit S-4's for further distribution.

12. Phone Listings. A copy of the phone list will be available from the Group HQ. Important Phone numbers are:

Group Duty	515 (If in town Dial 23040 and ask for 515)
Camp Bodin Duty (Norwegian)	648
Hangar #5 (Ops)	535
Hangar #7 (Ops)	283
Operator	9
City Line	0 then number desired

13. Religious Services. Unit S-4's are requested to contact Chaplain LEWIS for information on Religious Services.

14. Norwegian Regulations (Military).

- a. No photography is allowed inside the confines of Camp Bodin or on Bodo AS.
- b. No alcohol may be served to Norwegian CPL's or below. Alcohol may only be consumed in the Dining Hall from 1900-2300. No other area is authorized.
- c. No Marine vehicle may utilize the road adjacent to the lower tent camp.

d. Norwegian Officers will be saluted. Their rank insignia are as follows:

One Star	2ndLt
Two Stars	1stLt
Three Stars	Capt
One Star with White Border	Major
Two Star with White Border	LtCol

Norwegian Sgt's are the equivalent of Marine SNCO's and will be afforded the appropriate respect.

e. No driver may consume alcohol less than 8 hours prior to driving his military vehicle.

15. Norwegian Laws (Civilian).

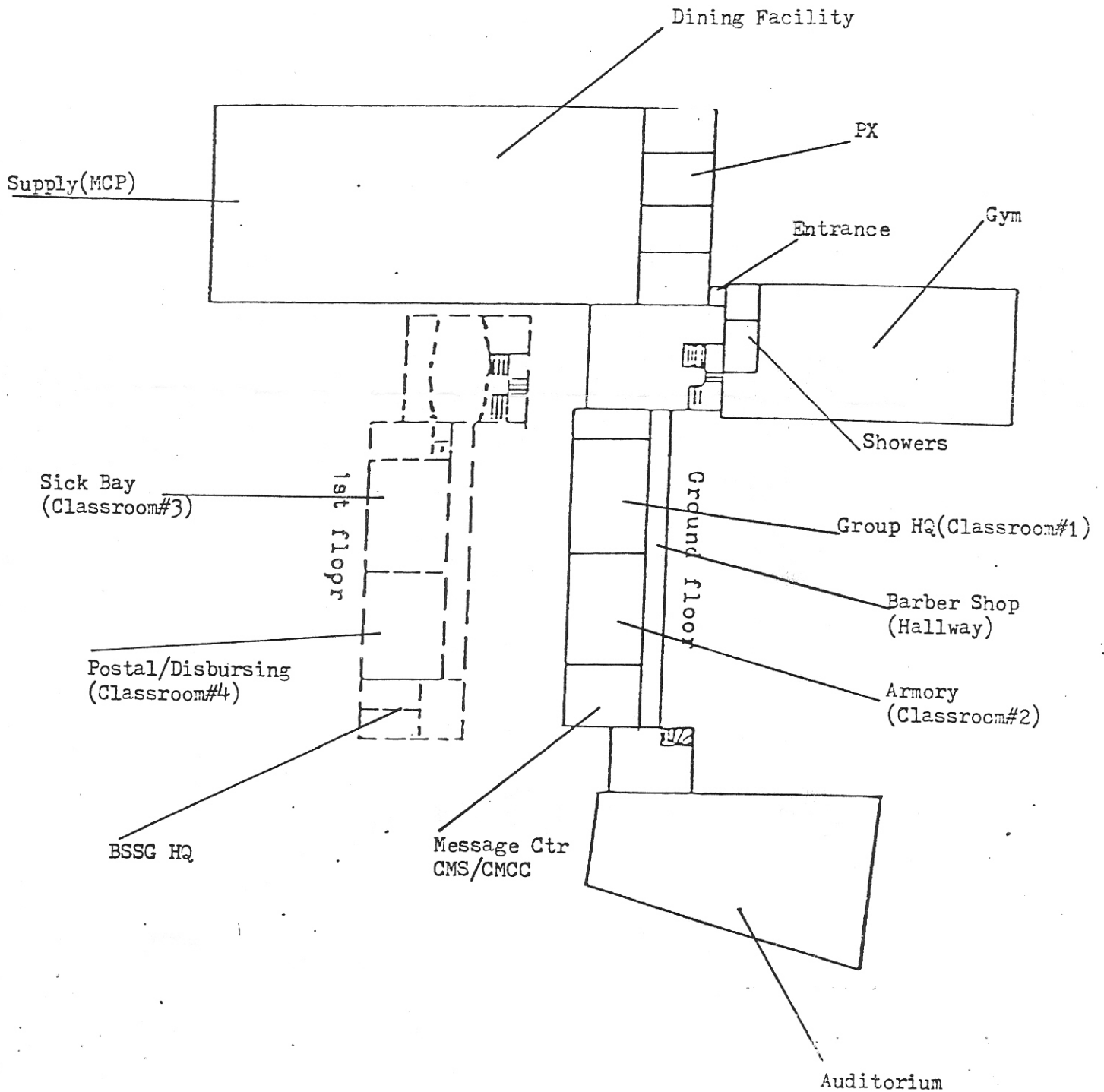
a. Duty Free Goods (PX Items). No Norwegian may purchase duty free goods from USMC personnel.

b. Drinking and Driving. 50 mgms of alcohol per 100 millilitres of blood (2 beers) while driving will earn 21 days in jail plus a \$2,000 fine. DO NOT DRINK AND DRIVE.

c. Car Rental. Only the renter may drive the car, renter must also ensure that the car is in an operable condition. Seat belts are mandatory.

d. Drug Offenses. Penalties for drug possession are severe (imprisonment). In addition, a suspect may be imprisoned while an investigation is being conducted on drug possession.

EXERCISE HALL/CLASSROOM AREA



# CAMP BODIN

